



WINDOWS HELLO CAMERA

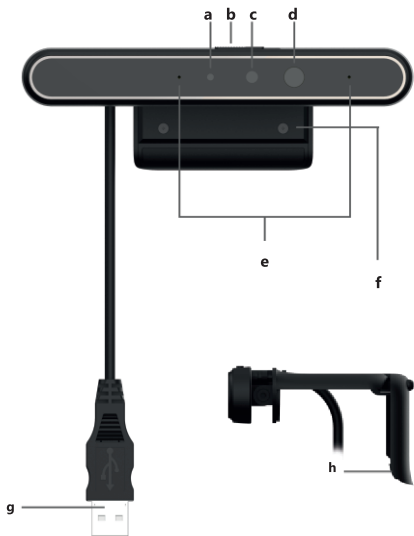
PVCCF2M202

Quick Start Guide

Version 1.0

EN Contents

General information	5
Operating instructions	5
Troubleshooting	11
Safety guidelines	12



- a. **EN** Video Camera Indicator
- b. **EN** Physical Privacy Switch
- c. **EN** IR/Video Combine Camera
- d. **EN** IR LED
- e. **EN** Dual Digital Microphone
- f. **EN** Rotating clip/base
- g. **EN** USB 2.0 Connector
- h. **EN** Flexible clip/base

EN General information

Weight	106g
Dimensions (L * W * H)	115*22*7.35 mm
Interfaces	USB 2.0 Audio codec for digital mic recorder, USB 3.0 (USB 2.0 for data, USB 3.0 for power)
IR Camera Resolution	640x 480
IR Max Image Transfer Rate	100fps @ 640x480
RGB Camera Resolution	1920x1080
RGB Max Image Transfer Rate	30fps @ 1920x1080
Microphone	Digital Microphone x 2
Detection Range	30~100cm
Physical Privacy Switch	Support
Recommended OS	Windows 10 (Without driver) to support Windows Hello, Windows 7/8/8.1 (32/64 bit OS) only to support Web Cam
Windows Hello	Support, Windows Hello4.x
Package Contents	QSG, Warranty Card
Warranty	1 year (service life: 2 years)

Operating instructions

Brief introduction

Windows Hello IR Camera is a camera which could authenticate to login or unlock Windows 10 system. The camera has the capability of transferring image data in FHD mode (for video) at 30 fps (max) for VGA mode (for IR Face recognition) at 100fps (max).

It supports the USB-Video-Class driver provided by Microsoft as a camera capture driver. So it can operate on Windows10 OS without installing another camera capture driver.

Privacy switch Description

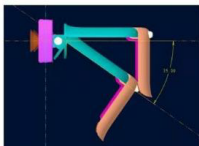
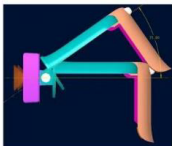
Physical privacy switch allows to cover your camera when you don't use it in order to protect your privacy.

Slide the switch to the right to cover the camera. You will see the red dot indicator on the cover which allows you to clearly see the status of privacy switch.

Slide the switch to the left if you want to use the camera for face recognition or video collaboration.

**Connection**

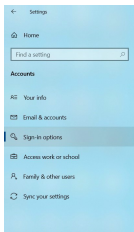
Open the flexible clip/base and mount the Windows Hello Camera, making sure the foot on the flexible clip/base is flush with the back of your monitor. Insert Camera USB to USB interface of your computer.



Maximum up and down bracket rotation angle

Setting Up Win Hello function

1. Open "Settings" menu and click on "Accounts" -> "Sign-in options".



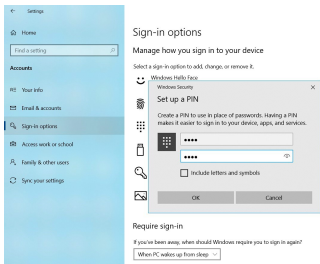
Sign-in options

Manage how you sign in to your device

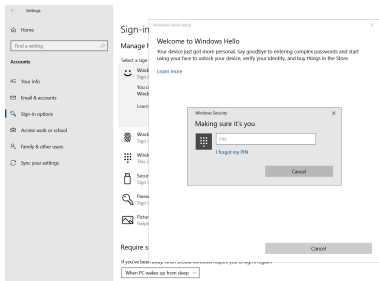
Select a sign-in option to add, change, or remove it.

-  Windows Hello Face
This option is currently unavailable—click to learn more
-  Windows Hello Fingerprint
Sign in with your fingerprint scanner (Recommended)
-  Windows Hello PIN
Sign in with your PIN (Recommended)
-  Security Key
Sign in with a physical security key
-  Password
Sign in with your account's password
-  Picture Password
Swipe and tap your favorite photo to unlock your device

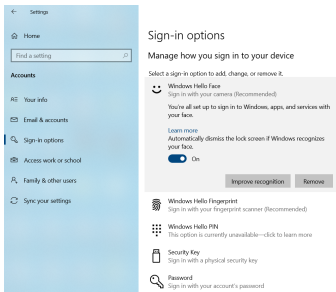
2. Set up a PIN code before using Windows Hello function. Hit the "Add" button under "PIN" section to set the password. Once you've done the Windows Hello options will be unlocked.



3. Select "Windows Hello Face" from the menu.



4. The next screen will give you a little background on what Windows Hello is. Enter the PIN to proceed.
5. Position yourself, so your face is in the center of the frame that appears on screen. The camera will then do what it needs to do to register your face.
6. Once you set up, you'll have an option that allows you to improve recognition. This is useful if you wear glasses, for example, as it'll allow you to be recorded with/without them on.



7. Now, when you go back to "Settings" you'll have three options: improve recognition, remove your face, and a toggle to turn on unlocking your PC when it sees your face.

Troubleshooting

Do not try to repair the device yourself, it may cause damage or injure. There are no user serviceable parts inside. Your device may only be repaired by Prestigio Specialist Service Centers.

Problem	Solution
Camera does not work	Check the switch cover first. Slide the switch to the left if it is necessary.
Problem when using the camera with online communication apps	Check for updates and make sure you are using the latest version of your online communication application. Make sure the microphone setting in the Sound Settings and Camera Settings in Video Settings is set to the current Video Device (please refer to the nameplate at the device).
A blank screen appears when launching the online communication application	After making a call, make sure the current camera is selected as the video device (please refer to the nameplate at the device).
Camera microphone does not work with online communication app	Select a sound setting option from the menu of the application you are using. Make sure the current device is selected as the microphone (please refer to the nameplate at the device). Check volume settings. Increase the volume if necessary.

Safety guidelines

Before using and operating this device, please read thoroughly and comply with the following precautions in order to prevent accidents or abnormal operation.

1. This device is not waterproof, please keep it dry; if water is immersed in this product, please shut down immediately and contact the customer service center before using it again.
2. Never place this device and accessories near the burning flames or other heat sources, including direct sunlight.
3. This device and accessories may contain some small parts, please keep them out of the reach of children to avoid danger.
4. Please contact professional service personnel for all repair services.
5. Please do not insert any sharp object into the inside of the device.
6. Please do not drop or hit the device to avoid damaging it.

NOTE. All information contained herein is subject to change without prior notice to users. Up-to-date information and detailed descriptions of the device, as well as the connection process, certificates, and information about companies that accept quality claims and warranties, can be found in the instructions available for download at prestigio.com/use. All trademarks and brand names are the property of their respective owners. Information about the manufacturer and suppliers can be found on the packaging.

www.prestigio.com

